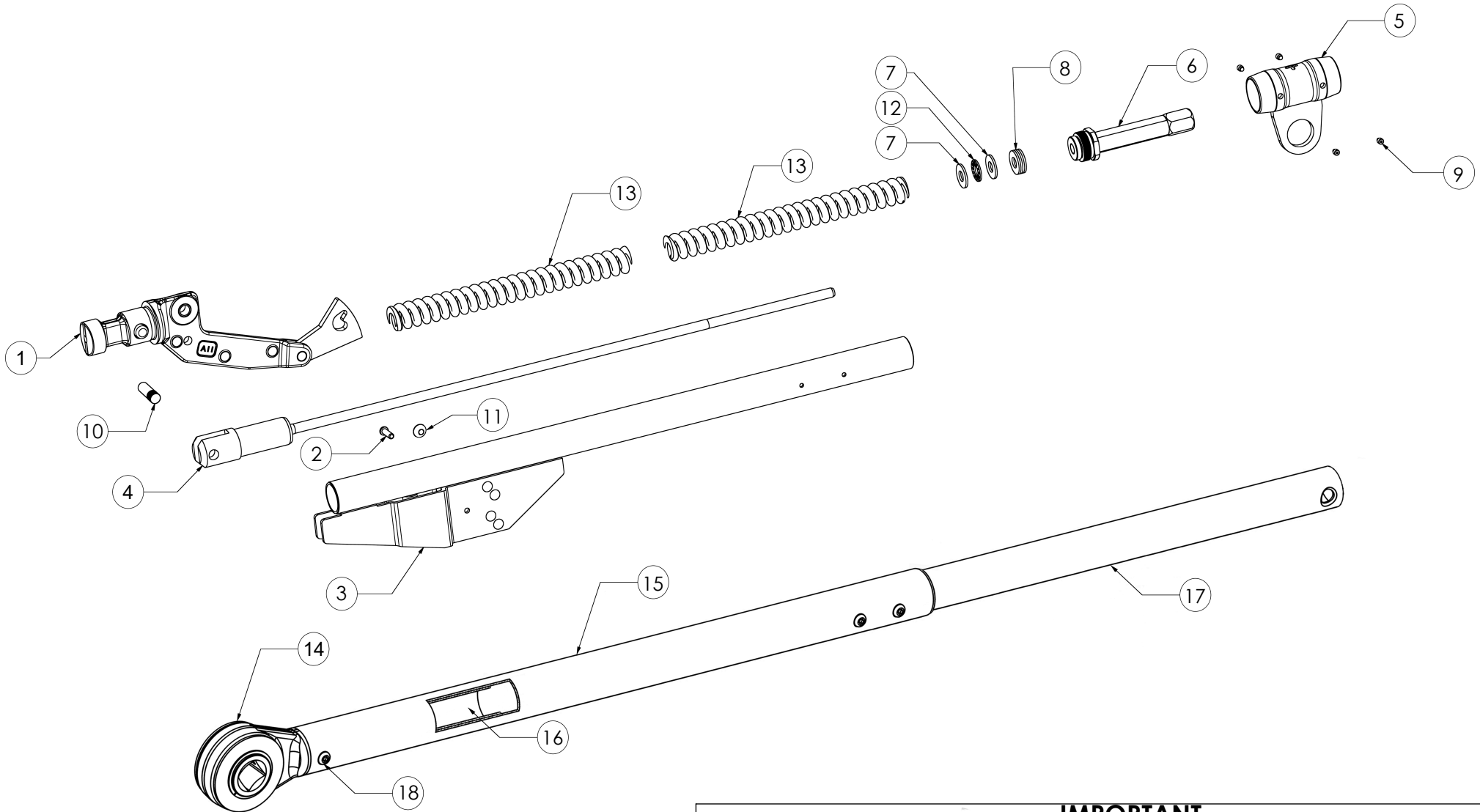


REVISION

1	
2	6112
3	
4	
5	
6	
7	
8	
9	
10	
11	
12	
13	
14	
15	
16	
17	
18	
19	
20	



IMPORTANT
WHEN ORDERING SPARES YOU MUST STATE THE FULL PART NUMBER AND THE
PRODUCT SERIAL NUMBER - FROM THE LABEL
TO PROTECT YOUR WARRANTY ALWAYS USE GENUINE HI-FORCE PARTS.

ITEM NO.	PART NUMBER	DESCRIPTION	QTY.	SPARE PARTS
1	121002	LEVER ARM ASSY INDUSTRIAL	1	
2	121006	CAM PIN	1	
3	121048	BODY ASSY 5AR-N	1	
4	121066	PLUNGER ASSY 5AR	1	
5	121092	PULL HANDLE 5AR-N	1	
6	121102	ADJ NUT ASSY 5AR-N 6R-N	1	
7	12216.01	HARDENED THRUST WASHER	2	
8	12216.02	WASHER 3/8 WHIT BR STEEL	4	
9	25497	SSS M5 x 5LG DOG POINT - 12.9 TO ISO4028	4	
10	26203	KNURLED PIN FOR IND. PLUNGER TO FORK END	1	
11	265141	5 mm AXLE CAP STARLOCK	1	
12	27201	BRG THRUST NEEDLE ROLLER TORRINGTON NO NTA613	1	
13	28150	INDUSTRIAL - N COMPRESSION SPRING	2	
14	121026	INDUSTRIAL RATCHET ASSEMBLY	1	
15	121070.BLK	RATCHET TUBE OUTER 5AR-N/6R-N PAINTED BLACK METALLIC	1	
16	121071	RATCHET INNER SUPPORT 5AR-N/6R-N	1	
17	121072.BLK	LEVER ARM TUBE 5AR-N/6R-N PAINTED BLACK	1	
18	25758	M6 x 20 LG BUTTON HEAD	3	

NOTE:

- ALL PARTS ARE AVAILABLE TO BE ORDERED AS SPARE PARTS (UNLESS MARKED WITH **x**)

REVISION

1	
2	6112
3	
4	
5	
6	
7	
8	
9	
10	
11	
12	
13	
14	
15	
16	
17	
18	
19	
20	

IMPORTANT

WHEN ORDERING SPARES YOU MUST STATE THE FULL PART NUMBER AND THE PRODUCT SERIAL NUMBER - FROM THE LABEL TO PROTECT YOUR WARRANTY ALWAYS USE GENUINE HI-FORCE PARTS.