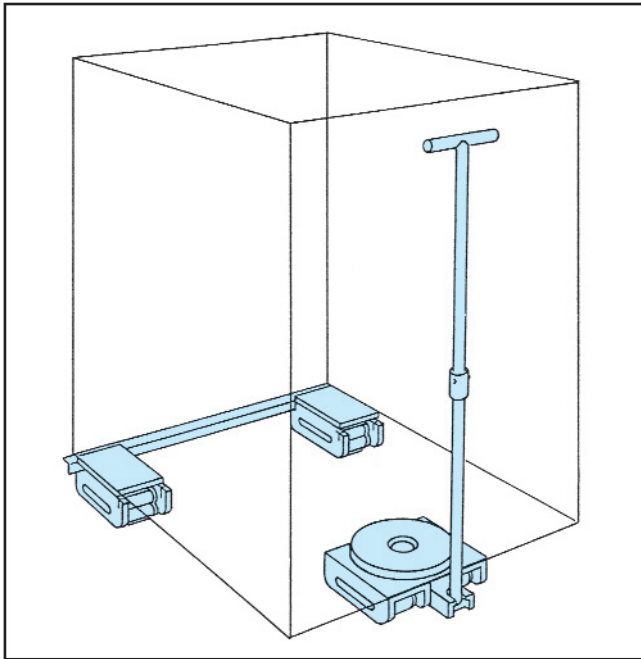


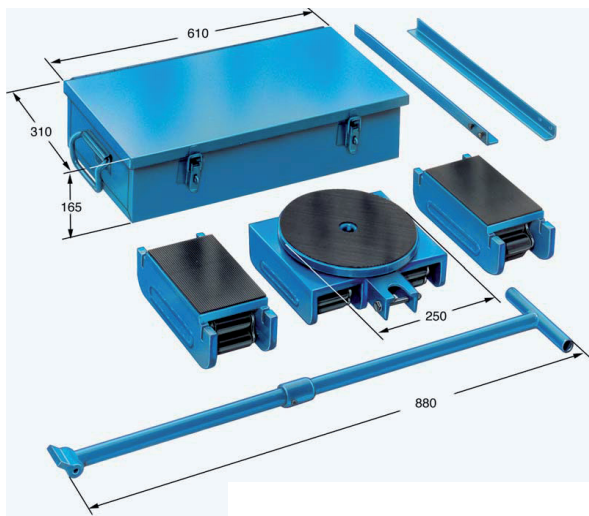
# Roller Skate – The Robusts – Complete Transport Kit



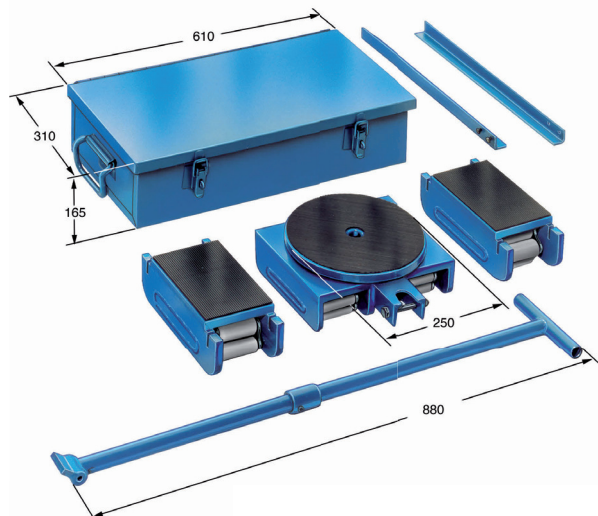
## Anwendungsbereich:

- With the Hercules you do not have to waste time in assembling the unit, and the low level contributes to safer working conditions.
- The Hercules makes it easier and safer to move heavy loads. 24 and 30 mm diameter rollers in the chain are available. This turntable is larger than the one in the Transport Kit N.
- For larger loads we recommend the use of a second twin Skate Roller with turntable in the front, and two normal skates as stabilisers at the back.
- Also available with polyamide chain rollers (PA6) with lower capacity to protect your floor against markings or damages.

Picture showing hardened steel chain rollers



Picture showing polyamide chain rollers



## The transport kit comprises:

- 1 Twin Skate Roller with fitted turntable
- 2 Roller Skates with fitted top plates
- 1 handle
- 1 link-up bar
- All in a metal box

## Mod. Hercules, Hercules PA6

Mod.	Rollers Ø Twin	Rollers Ø Single	Length support	Width support	Total height	Swivel-pl. Ø	Max. load kN	Weight of set			
Hercules	30	24	200	130	110	250	350	68			
Hercules PA 6	30	24	200	130	110	250	120	63			

All dimensions in mm

# Roller Skate – The Solids – Complete Transport Kit

## Range of application:

- For short, variable transportation distances.
- Movement of moderately heavy loads, e.g. machines, parts of machines and for installation works.
- A speed of 5 m/min should not be exceeded.
- It is possible to turn corners by placing turntables on top of the Roller Skates. Handles have to be attached but only guide the load while the Roller Skates are moving.
- Minimum turning circle is 3 m.

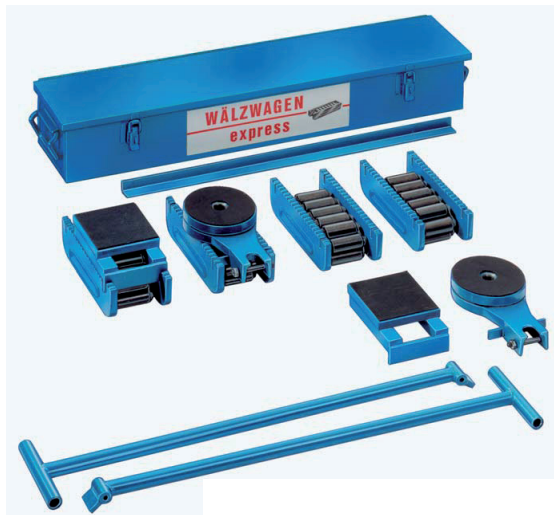
## Hints on use:

- All maximum carrying capacities are based for use on a steel surface, which withstands the pressure of the chain-roller. For safety, the carrying capacities in complete sets are calculated so that 2 Roller Skates could support the full load on uneven surfaces.
- The track surface is important for the safe transportation of the load, not the carrying capacity of the Roller Skate. Tiles are unsuitable. Movement on tarmac and concrete is restricted. In these cases it is recommended to put a steel plate of a minimum of 10 mm thickness underneath.
- Also available with polyamide chain rollers (PA6) with lower capacity to protect your tarmac, concrete or coated floor against markings or damages.



- Possible problems can be avoided by choosing Roller Skate models with larger diameter rollers in the chain.
- Visual control for the alignment and direction of the load is made easier by inserting the link-up bar into the slots provided on the Roller Skate.
- The difference in height of Skates with turntables is compensated by the use of packing plates.

Picture showing hardened steel chain rollers



Picture showing polyamide chain rollers



### The complete set consists of:

- 4 Roller Skates Mod. N
- 2 Turntables
- 2 packing plates
- 2 Handles
- 2 link-up bars
- 1 metal box

## Complete transport kit Mod. N, N-PA6

Mod.	Rollers Ø	Length support	Width support	Total height	Swivel-pl. Ø	Max. load kN	Weight of set				
I	18	120	120	108	130	200	48				
II	24	120	120	117	130	300	56				
II-PA6	24	120	120	117	130	120	53				
III	30	130	130	140	150	600	90				
III-PA6	30	130	130	140	150	200	82				

All dimensions in mm

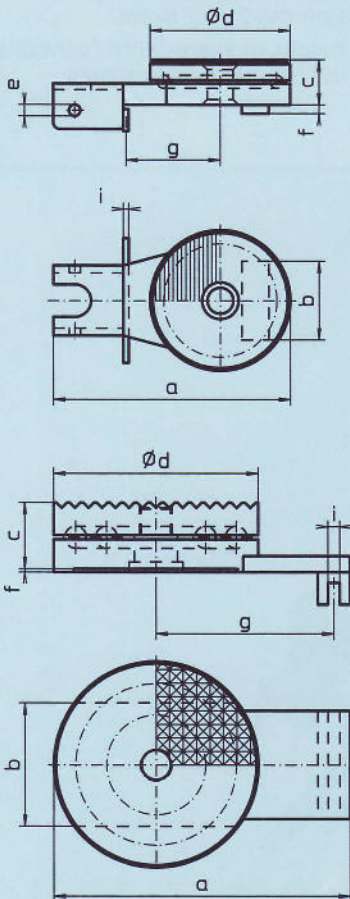
Accessory only for models ... N

For variable transportation

# Roller Skate Express – The Solids



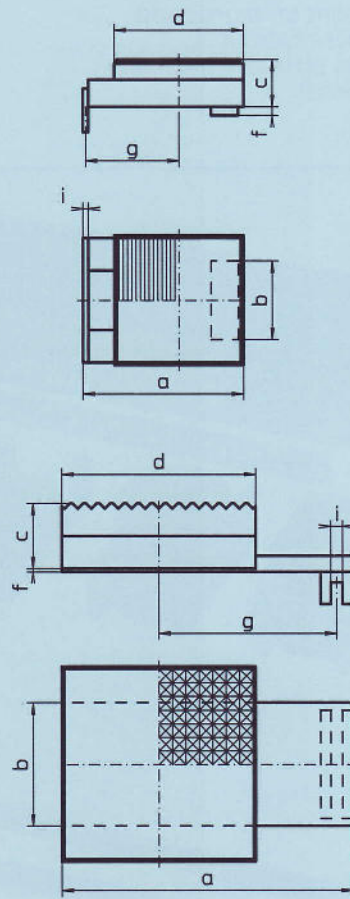
## Swivel/Turntable



Mod.  
I-III

Mod.  
IV-V

## Packing plate / Levelling plate



Necessary for turning corners: Turntables are to be placed on top, handle has to be attached; only guide while Roller Skate is moving. Minimum turning circle is 3 m.

Necessary for use with turntable: packing plate for compensating the difference in height between Skates with turntables and the ones without.

### Turntable

### Packing plate / Levelling plate

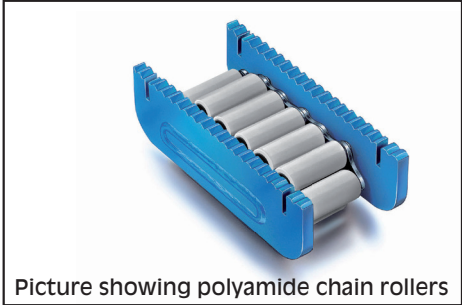
Mod.	a	b	c	Ø d	e	f	g	i	Weight kg	Mod.	a	b	c	d	f	g	i	Weight kg
I	220	73	42	130	11	8	87	5	4.5	I	149	73	42	120	8	87	5	3.7
II	220	86	42	130	11	8	87	5	4.5	II	149	86	42	120	8	87	5	3.7
III	250	96	48	150	11	8	108	5	6.7	III	178	96	48	130	8	108	5	5.3
IV	275	114	61	190		3	165	11	13.7	IV	270	114	61	180	3	165	11	13.8
V	360	128	61	220		3	235	11	18.9	V	350	128	61	200	3	235	11	18.8

All dimensions in mm

# Roller Skate Express – The Solids

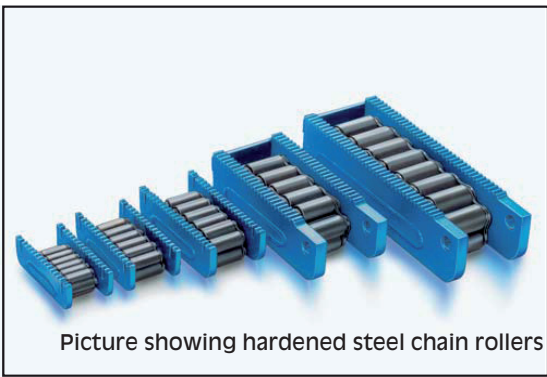
**Range of application:**

- For short variable ways of transportation.
- Movement of moderately heavy loads, e.g. machines, parts of machines and for installation works.
- Allows to turn corners by using turntables (see dwg. 3).
- A speed of 5 m/min should not be exceeded.
- Frequently used as complete transport kit (see dwg. 2).



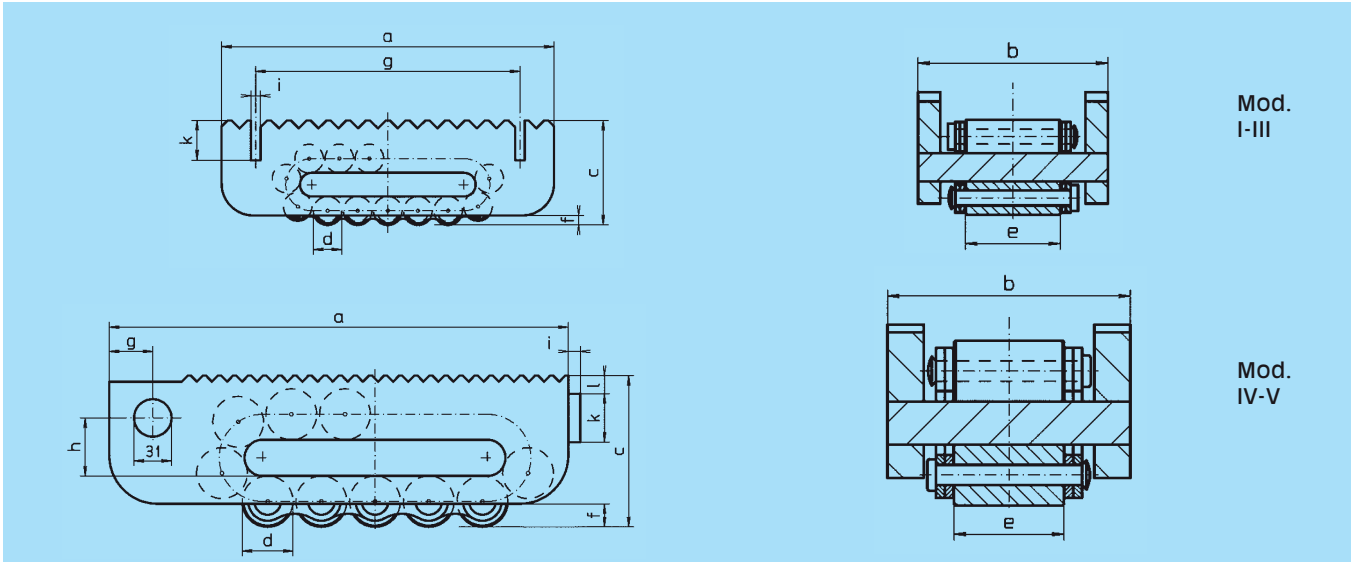
**Characteristics of the most sold series Express model... N:**

- stable, solid, basic construction
- low level construction
- Accessories for turning corners



**Hints on use:**

- The track surface is important for the safe transportation of the load, not the carrying capacity of the Roller Skate. Tiles are insufficient. The movement on tarmac and concrete is restricted. In these cases a steel plate of a minimum of 10 mm thickness is recommended.
- Also available with polyamide chain rollers (PA6) with lower capacity to protect your tarmac, concrete or coated floor against markings or damages.
- Possible problems can be avoided by choosing Roller Skate models with a larger roller diameter within the chain.
- All maximum carrying capacities are based for use on a steel surface, which withstands the high pressure of the chain-rollers. For safety, the carrying capacities on complete sets are calculated so that on uneven surfaces 2 Roller Skates could support the full load.
- Due to the little effort required to overcome the rolling resistance (4 -7% of the total load) precautionary measures must be taken for use on inclined surfaces.



**Mod. N, N-PA6**

Mod.	a	b	c	d Ø	e	f	g	h	i	k	l	Rollers under stress	Number of rollers	Max. load kN	Weight kg
I	210	100	66	18	51	6	167		6	25		5	15	100	5,2
II	220	113	75	24	60	10	180		6	25		4	13	150	7,3
II-PA6	220	113	75	24	60	10	180		6	25		4	13	60	6,5
III	270	130	92	30	68	10	217		6	25		4	13	300	13,0
III-PA6	270	130	92	30	68	10	217		6	25		4	13	100	11,0
IV	380	168	127	42	76	16	36	48	10	40	15	4	13	600	32,0
V	530	182	147	50	86	19	36	60	10	40	15	6	17	800	61,0

All dimensions in mm