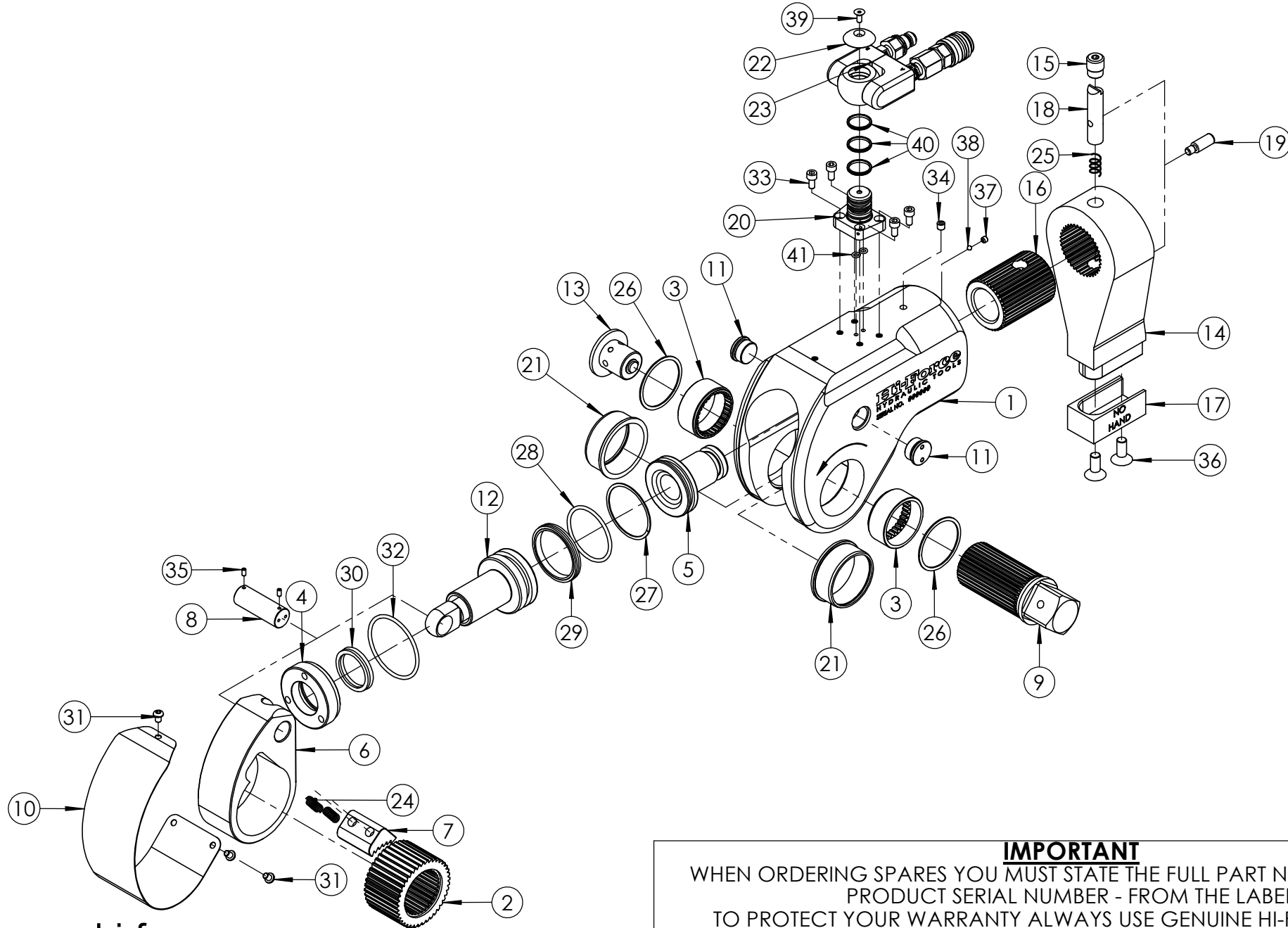


REVISION

1	
2	
3	
4	3891
5	6265
6	6390
7	
8	
9	
10	
11	
12	
13	
14	
15	
16	
17	
18	
19	
20	



IMPORTANT
 WHEN ORDERING SPARES YOU MUST STATE THE FULL PART NUMBER AND THE
 PRODUCT SERIAL NUMBER - FROM THE LABEL
 TO PROTECT YOUR WARRANTY ALWAYS USE GENUINE HI-FORCE PARTS.

TWS-N HYDRAULIC TORQUE WRENCHES - SQUARE DRIVE

SERIAL NUMBERS

FROM EB4776

PRODUCT NO.

TWS150N

SHT 2 OF
2 SHTS

ITEM NO.	PART NUMBER	DESCRIPTION	QTY.	SPARE PARTS	SERVICE PARTS	ITEM NO.	PART NUMBER	DESCRIPTION	QTY.	SPARE PARTS	SERVICE PARTS	REVISION
1	TTC150BA002	BODY	1	X		31	BLC006JH008	M6 x 8 SOCKET BUTTON HEAD SCREW	3			1
2	TTC150WS001	RATCHET WHEEL	1			32	SEC067RE001	O-RING - I.D. 66.04 mm, C.S. 3.53 mm, NITRILE 90 SHORE	1	X	✓	2
3	TTC150FB001	BEARING	2			33	BLC006JC012	M6 x 12 SOCKET CAP HEAD SCREW	4			3
4	TTC150GB001	GLAND	1			34	FPC002PN001	1/16"NPTF x 7/8" TAPER PLUG	1			4
5	TTC150ES001	END PLUG	1			35	FAS004ME008	M4 x 8 SOCKET CUP POINT SCREW	2			5
6	TTC150CS001	DRIVE PLATE	1			36	BLC010LF025	M10 x 25 SOCKET COUNTERSUNK SCREW	2			6
7	TTC150PS001	DRIVE SEGMENT	1			37	FAS006MB005	SOCKET CUP POINT SCREW M6 x 5	1			7
8	TTC150JS001	DRIVE PIN	1			38	BAC005SN001	3/16" BALL	1			8
9	TTC150DS001	SQUARE DRIVE	1			39	BLC005HF012	M5 x 12 HEX SOCKET COUNTERSUNK SCREW	1			9
10	TTC150LS002	SHROUD	1			40	SEC025MF001	ROTARY SEAL - O.D. 25.01 mm, I.D. 21.87 mm, H. 2.4 mm HPU-R95	3	X	✓	10
11	TTC150AA001	PLUG	2			41	SEC009RA003	O-RING - I.D. 5.28 mm, C.S. 1.78 mm NITRILE 70	2	X	✓	11
12	TTA150NS001	PISTON ASSEMBLY	1									12
13	TTA150LA001	RELEASE BUTTON ASSEMBLY	1									13
14	TTC150QA002	REACTION ARM	1									14
15	TTC150AS001	PLUG	1									15
16	TTC150KS001	SPLINE SLEEVE	1									16
17	TTC150ES002	END CAP	1									17
18	TTC150JS002	LATCH PIN	1									18
19	TTC150JS003	RELEASE	1									19
20	TTA000SA003	SWIVEL BASE ASSEMBLY	1									20
21	TTC150FS002	SLEEVE	2									
22	TTC000SA010	SWIVEL CAP	1									
23	TTA000SA001	SWIVEL CONNECTOR ASSEMBLY	1									
24	SPC009CA003	SPRING	2									
25	SPC012CA003	SPRING	1									
26	STC058TA001	RETAINING RING	2	X	✓							
27	SEC064BA001	Backup ring – O.D. 63.50 mm I.D. 57.40 mm H. 1 mm PTFE	1	X	✓							
28	SEC064RA002	O-RING - I.D. 56.74 mm, C.S. 3.53 mm, NITRILE 90 SHORE	1	X	✓							
29	SEC063GA001	PISTON T SEAL - O.D. 63.5 mm, I.D. 53.98 mm, H 7.11 mm, NBR/NYLON 70 SHORE	1	X	✓							
30	SEC038LE001	ROD LIP SEAL - O.D. 48 mm, I.D. 38 mm, H 7 mm, POLYURETHANE	1	X	✓							

NOTE:

- ALL PARTS ARE AVAILABLE TO BE ORDERED AS INDIVIDUAL SPARE PARTS UNLESS MARKED WITH X.

- ALL PARTS MARKED WITH A ✓ ARE ONLY AVAILABLE IN SERVICE KIT **TWS150NTP4-K**

NOTE:

- FOR SUB ASSEMBLY **TTA000SA001** REFER TO IT'S INDIVIDUAL EVD.

IMPORTANT

WHEN ORDERING SPARES YOU MUST STATE THE FULL PART NUMBER AND THE PRODUCT SERIAL NUMBER - FROM THE LABEL TO PROTECT YOUR WARRANTY ALWAYS USE GENUINE HI-FORCE PARTS.

ITEM NO.	PART NUMBER	DESCRIPTION	QTY.	SPARE PARTS
1	TTC000SA011	SWIVEL BASE	1	X
2	FAS006MA005	M6 X 5 MM FLAT POINT GRUB SCREWS (DIN 913 / ISO 4026) – STAINLESS STEEL (A4) + 180 NYLON PATCH.	1	X
3	VRA280GB001	SPRING SEAT	1	X
4	SPC005CA008	COMPRESSION SPRING	1	X
5	BAC005SN001	3/16" BALL CHROME STEEL	1	X

REVISION

1 6484

2

3

4

5

6

7

8

9

10

11

12

13

14

15

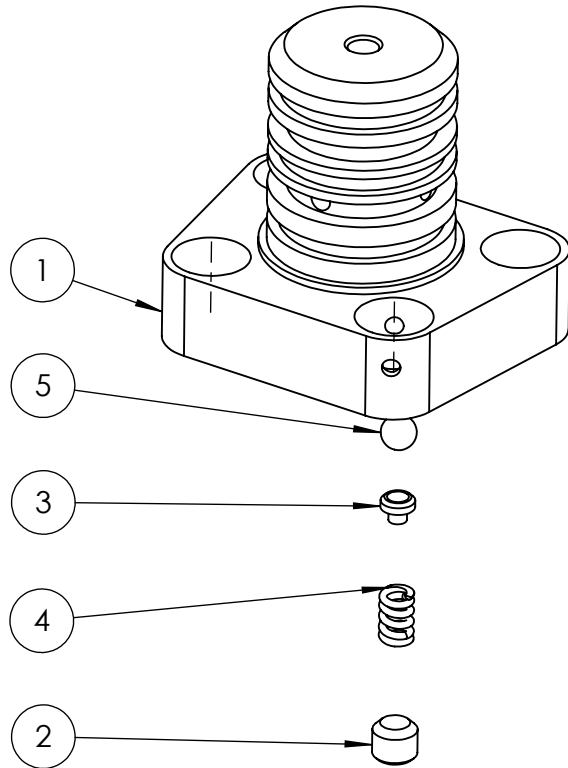
16

17

18

19

20



NOTE:

- ALL PARTS AVAILABLE TO ORDER AS AN INDIVIDUAL SPARE PART UNLESS MARKED X.

IMPORTANT

WHEN ORDERING SPARES YOU MUST STATE THE FULL PART NUMBER AND THE PRODUCT SERIAL NUMBER - FROM THE LABEL TO PROTECT YOUR WARRANTY ALWAYS USE GENUINE HI-FORCE PARTS.

NOTE:

- ALL PARTS AVAILABLE TO ORDER AS AN INDIVIDUAL SPARE PART UNLESS MARKED X.

- PARTS MARKED WITH A ✓ ARE **ONLY** AVAILABLE AS PART OF SERVICE KITS;

TWS17NTP4-K

TWS45NTP4-K

TWS100NTP4-K

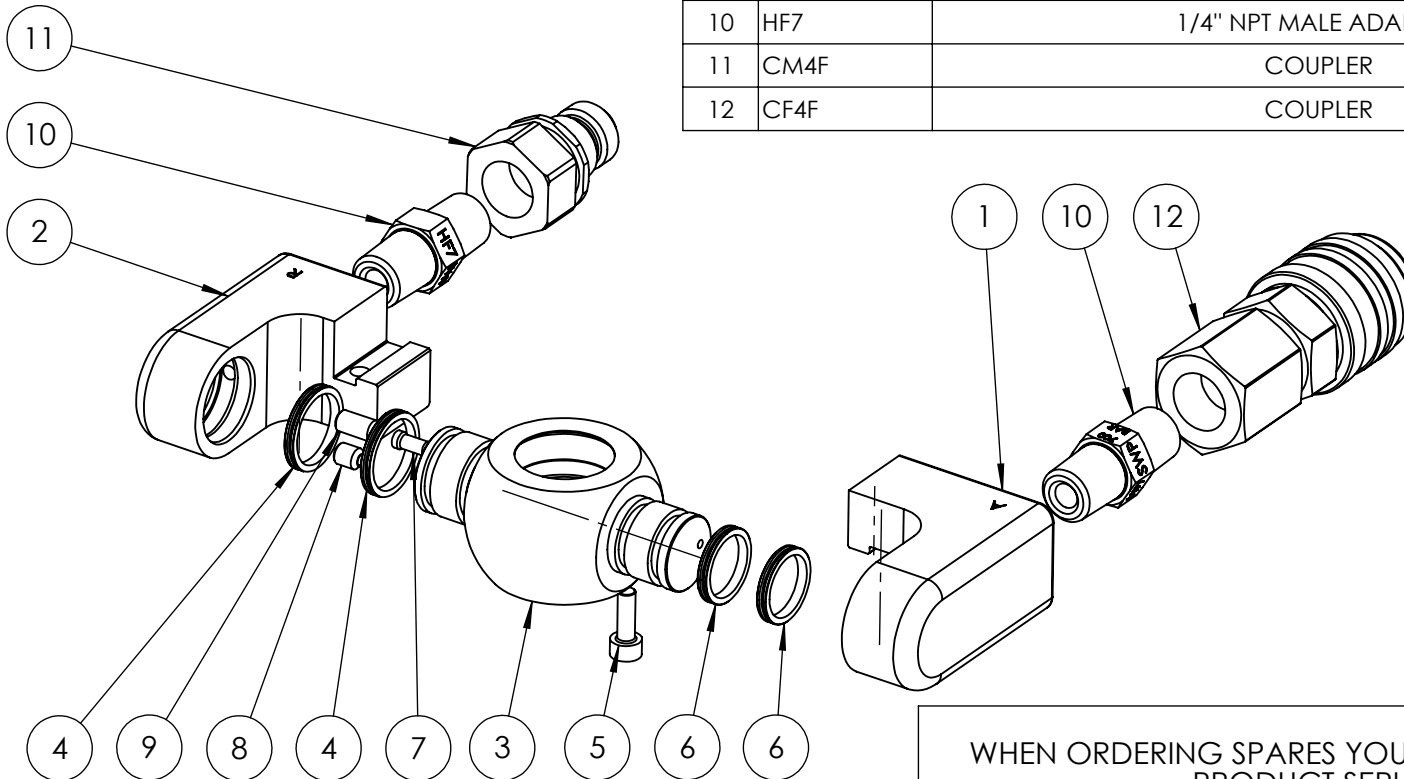
TWS150NTP4-K

TWS370NTP4-K

TWH430NTP4-K.

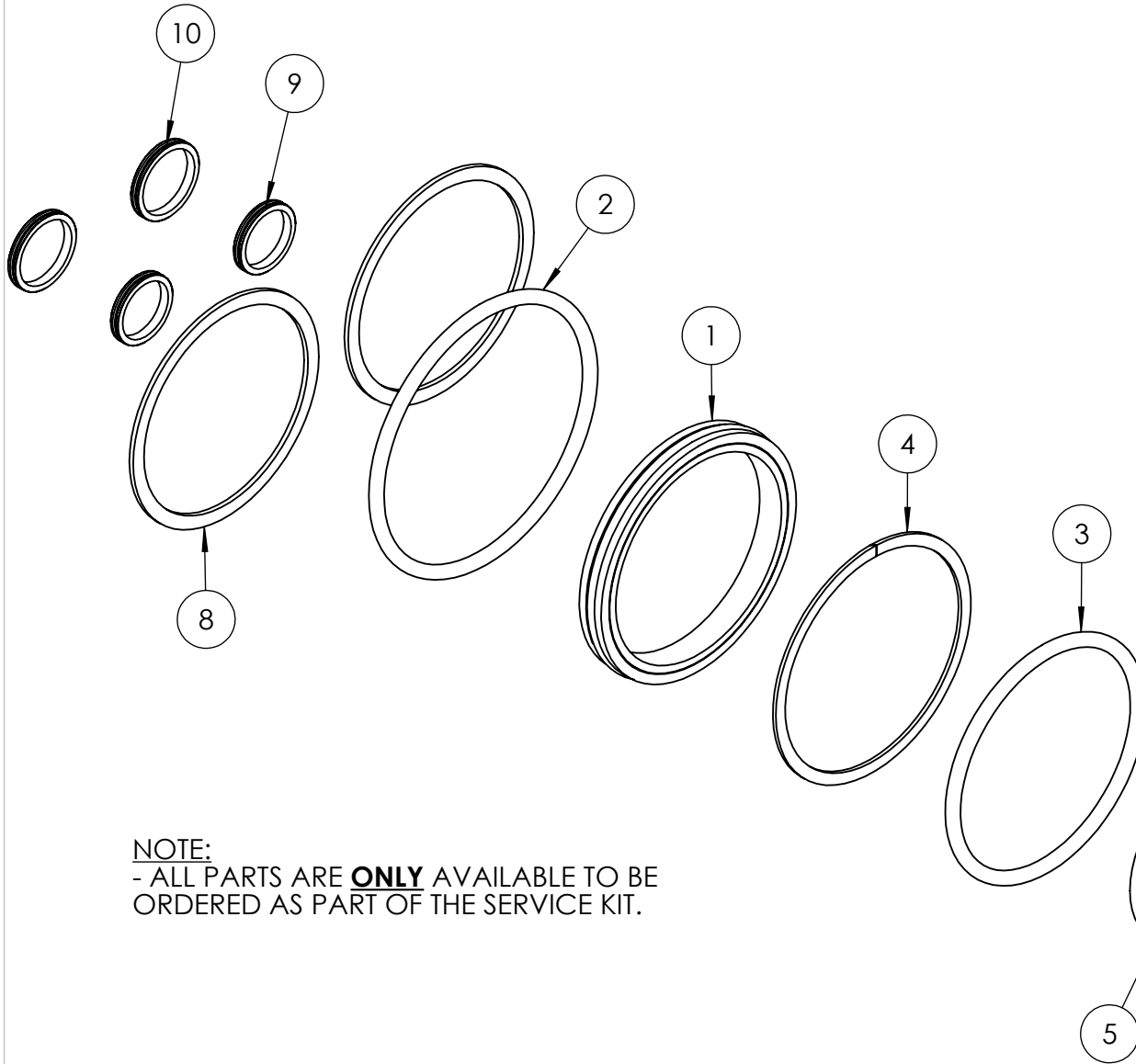
(REFER TO INDIVIDUAL TORQUE TOOL SERVICE KIT EVD'S FOR FULL PARTS LIST)

ITEM NO.	PART NUMBER	DESCRIPTION	QTY.	SPARE PARTS	SERVICE PARTS
1	TTC000SA007	ADVANCE FLAPPER	1	X	
2	TTC000SA008	RETRACT FLAPPER	1	X	
3	TTC000SA009	TRUNNION	1	X	
4	SEC020MF001	ROTARY SEAL - O.D. 20.15 mm , I.D. 17.03 mm , H. 2.4 mm HPU-R95	2	X	✓
5	BLC004JD012	SOCKET CAP HD SCREW M4 x 12	1	X	
6	SEC018MF001	ROTARY SEAL - O.D. 18.02 mm , I.D. 15.03 mm , H. 2.4 mm HPU-R95	2	X	✓
7	BPC003TS001	PLUG	1	X	
8	FAS005ME006	SOCKET CUP PT SCREW M5 x 6	1	X	
9	FAS005ME010	SOCKET CUP PT SCREW M5 x 10	1	X	
10	HF7	1/4" NPT MALE ADAPTOR	2	X	
11	CM4F	COUPLER	1		
12	CF4F	COUPLER	1		



IMPORTANT

WHEN ORDERING SPARES YOU MUST STATE THE FULL PART NUMBER AND THE PRODUCT SERIAL NUMBER - FROM THE LABEL TO PROTECT YOUR WARRANTY ALWAYS USE GENUINE HI-FORCE PARTS.



NOTE:

- ALL PARTS ARE **ONLY** AVAILABLE TO BE ORDERED AS PART OF THE SERVICE KIT.

ITEM NO.	PART NUMBER	DESCRIPTION	QTY.	REVISION
1	SEC063GA001	PISTON T SEAL - O.D. 63.5 mm, I.D. 53.98 mm, H 7.11 mm, NBR/NYLON 70 SHORE	1	1 6390
2	SEC067RE001	O-RING - I.D. 66.04 mm, C.S. 3.53 mm, NITRILE 90 SHORE	1	2
3	SEC064RA002	O-RING - I.D. 56.74 mm, C.S. 3.53 mm, NITRILE 90 SHORE	1	3
4	SEC064BA001	Backup ring - O.D. 63.50 mm I.D. 57.40 mm H. 1 mm PTFE	1	4
5	SEC038LE001	ROD LIP SEAL - O.D. 48 mm, I.D. 38 mm, H 7 mm, POLYURETHANE	1	5
6	SEC025MF001	ROTARY SEAL - O.D. 25.01 mm , I.D. 21.87 mm , H. 2.4 mm HPU-R95	3	6
7	SEC009RA003	O-RING - I.D. 5.28 mm , C.S. 1.78 mm NITRILE 70	2	7
8	STC058TA001	RETAINING RING	2	8
9	SEC018MF001	ROTARY SEAL - O.D. 18.02 mm , I.D. 15.03 mm , H. 2.4 mm HPU-R95	2	9
10	SEC020MF001	ROTARY SEAL - O.D. 20.15 mm , I.D. 17.03 mm , H. 2.4 mm HPU-R95	2	10

20

IMPORTANT

WHEN ORDERING SPARES YOU MUST STATE THE FULL PART NUMBER AND THE PRODUCT SERIAL NUMBER - FROM THE LABEL TO PROTECT YOUR WARRANTY ALWAYS USE GENUINE HI-FORCE PARTS.